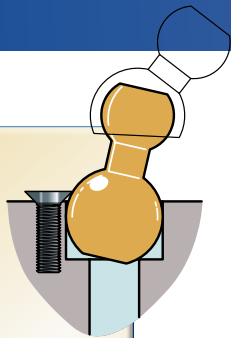
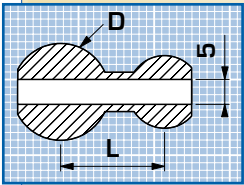
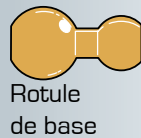


Tuyaux Articulés HP

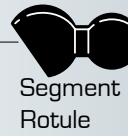
Rotule de base



D	L	Réf.
10 mm	10,2	SM2505
12 mm	10,2	SM2510
14 mm	10,2	SM2515
15 mm	10,2	SM2520
22 mm	10,2	SM2525
1/2"	10,2	SM2530
5/8"	10,2	SM2535



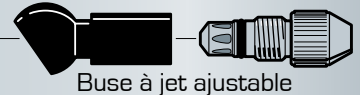
Rotule de base



Segment Rotule



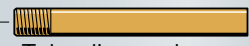
Raccord



Buse à jet ajustable



Buse à jet fixe



Tube d'extension

Température d'utilisation 43°C maxi. Pression maxi 6,7 bars

Rotule de base en laiton, raccord en acétal

Segment rotule et buses en acétal, gicleurs en aluminium



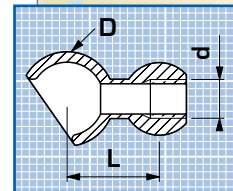
Pince d'assemblage

SM2910



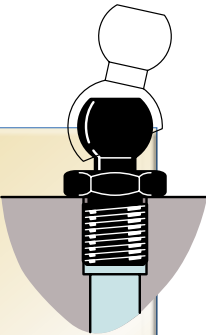
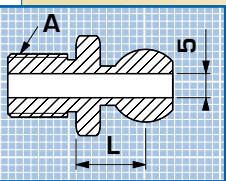
Indispensable

Segment Rotule



D	d	L	Réf.
15,7	M 6	15,2	SM2610

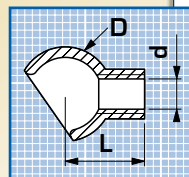
Raccord



A	L	Réf.
Métrique		
M 10 x 1,25	10,2	SM2550
M 10 x 1,5	10,2	SM2555
M 12 x 1,25	10,2	SM2560
M 12 x 1,75	10,2	SM2565
M 14 x 1	10,2	SM2570
M 14 x 2	10,2	SM2575
NPT/BSPT		
1/8"	10,2	SM2540
1/4"	10,2	SM2545

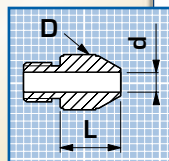


Buse à jet fixe



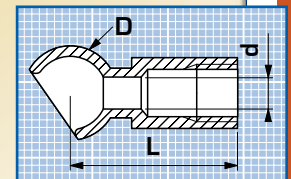
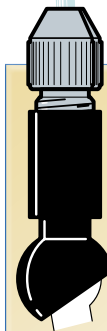
D	d	L	Réf.
15,8 pour Gicleurs	12,7		SM2710

Gicleur à jet fixe



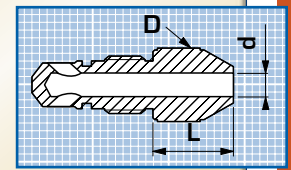
D	d	L	Réf.
12,2	1,6	10,2	SM2720
12,2	2,2	10,2	SM2730
12,2	3	10,2	SM2740
12,2	4	10,2	SM2750
Assortiment			SM2760
4 gicleurs : 1,6 - 2,2 - 3 - 4			

Buse longue à jet ajustable



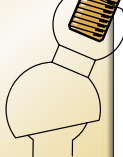
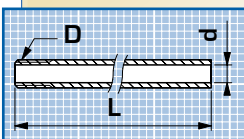
D	d	L	Réf.
15,8 pour Gicleurs	28,45		SM2810

Gicleur réglable



D	d	L	Réf.
12,2	2,2	12,7	SM2820
12,2	3	12,7	SM2830
12,2	4	12,7	SM2840
Assortiment			SM2850
3 gicleurs : 2,2 - 3 - 4			

Tube d'extension pour segment rotule



D	d	L	Réf.
M 6	4	50	SB9730

ARROSAJE HAUTE PRESSION

KOPAL 43